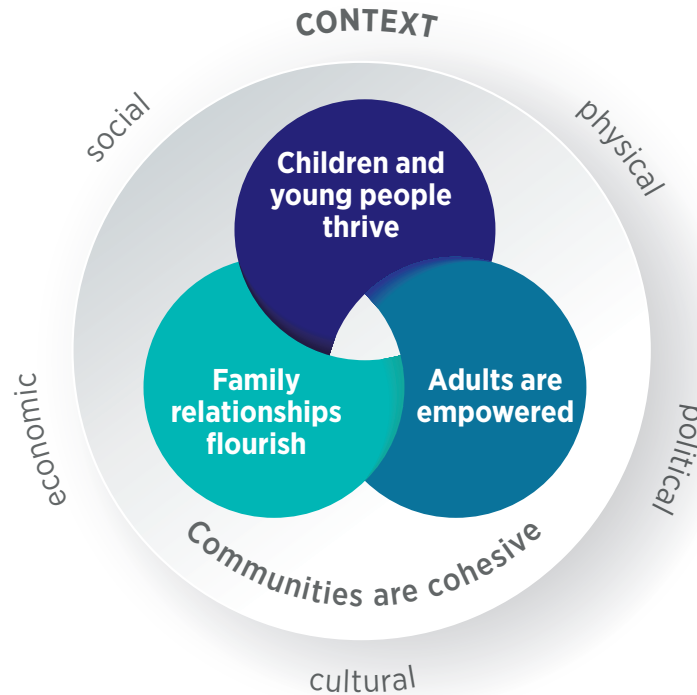


# Families and Children Activity outcomes framework



## AIM: CHILDREN AND YOUNG PEOPLE THRIVE

### OUTCOMES:

- Positive mental health and wellbeing
- Increased resilience
- Positive relationships
- Safe at home and in the community
- Strong connections to social supports and community
- Strong connection to culture
- Greater participation in decision making
- Positive development
- Positive engagement in education and training

## AIM: ADULTS ARE EMPOWERED

### OUTCOMES:

- Positive mental health and wellbeing
- Increased resilience
- Positive relationships
- Safe at home and in the community
- Strong connections to social supports and community
- Strong connection to culture
- Greater participation in decision making
- Sense of self-efficacy and confidence

## AIM: FAMILY RELATIONSHIPS FLOURISH

### OUTCOMES:

- Positive parenting/caregiver practices
- Positive caregiver-child relationship
- Respectful relationships
- Family cohesion
- Effective conflict management

## AIM: COMMUNITIES ARE COHESIVE

### OUTCOMES:

- Communities are safe
- Communities are inclusive
- Communities understand issues facing children, young people and families
- All community members are able to participate in decision making
- Services are accessible and appropriate
- Services are safe and inclusive
- Services work together to support families

### WHAT DO WE MEAN WHEN WE SAY FAMILY?

A family can be made up of anyone a person considers to be their family. Families can include children, but they may not. Family members contribute significantly to the wellbeing of each other and play essential roles in supporting each other through life's transitions, stresses and celebrations.

### WHAT DO WE MEAN WHEN WE SAY CONTEXT?

The context is the physical, social, cultural, economic and political environment that clients are located within. It can influence the extent to which clients' basic needs, such as stable housing and food security, are met and, in turn, can affect their ability to engage consistently and effectively with services.

# Suggested data exchange SCORE

## Aim: Children and young people thrive



### Outcome: Positive mental health and wellbeing

Circumstances SCORE

- Mental health, wellbeing and self-care

SCORE Translation Matrix

- Strengths and Difficulties Questionnaire

### Outcome: Increased resilience

Circumstances SCORE

- Mental health, wellbeing and self-care

### Outcome: Positive relationships

Circumstances SCORE

- Mental health, wellbeing and self-care
- Family functioning

### Outcome: Safe at home and in the community

Circumstances SCORE

- Personal and family safety

SCORE Translation Matrix

- Child Neglect Index
- Personal Wellbeing Index

### Outcome: Strong connections to social supports and community

Circumstances SCORE

- Community participation and networks

SCORE Translation Matrix

- Personal Wellbeing Index

### Outcome: Strong connection to culture

Circumstances SCORE

- Mental health, wellbeing and self-care
- Community participation and networks

### Outcome: Greater participation in decision making

Circumstances SCORE

- Community participation and networks

### Outcome: Positive development

Circumstances SCORE

- Age-appropriate development

SCORE Translation Matrix

- Strengths and Difficulties Questionnaire

### Outcome: Positive engagement in education and training

Circumstances SCORE

- Education and skills training

## Aim: Family relationships flourish



### Outcome: Positive parenting/caregiver practices

Circumstances SCORE

- Family functioning

SCORE Translation Matrix

- Parental Empowerment and Efficacy Measure

### Outcome: Positive caregiver-child relationship

Circumstances SCORE

- Family functioning

### Outcome: Respectful relationships

Circumstances SCORE

- Family functioning
- Personal and family safety

### Outcome: Family cohesion

Circumstances SCORE

- Family functioning

### Outcome: Effective conflict management

Circumstances SCORE

- Family functioning
- Personal and family safety

**Aim:****Adults are empowered****Outcome: Positive mental health and wellbeing**

Circumstances SCORE

- Mental health, wellbeing and self-care

SCORE Translation Matrix

- Carers Star
- Edinburgh Postnatal Depression Scale
- Growth Empowerment Measure
- Kessler Psychological Distress Scale (K10)
- Outcome Rating Scale

**Outcome: Increased resilience**

Circumstances SCORE

- Mental health, wellbeing and self-care

SCORE Translation Matrix

- Edinburgh Postnatal Depression Scale
- Growth Empowerment Measure
- Kessler Psychological Distress Scale (K10)

**Outcome: Positive relationships**

Circumstances SCORE

- Family functioning
- Mental health, wellbeing and self-care

**Outcome: Safe at home and in the community**

Circumstances SCORE

- Personal and family safety

SCORE Translation Matrix

- Personal Wellbeing Index

**Outcome: Strong connections to social supports and community**

Circumstances SCORE

- Community participation and networks

SCORE Translation Matrix

- Personal Wellbeing Index
- Parental Empowerment and Efficacy Measure

**Outcome: Strong connection to culture**

Circumstances SCORE

- Mental health, wellbeing and self-care
- Community participation and networks

**Outcome: Greater participation in decision making**

Circumstances SCORE

- Community participation and networks

**Outcome: Sense of self-efficacy and confidence**

Circumstances SCORE

- Mental health, wellbeing and self-care

SCORE Translation Matrix

- Personal Wellbeing Index
- Parental Empowerment and Efficacy Measure

**Aim:****Communities are cohesive****Outcome: Communities are safe**

Community SCORE

- Social cohesion
- Group/community knowledge, skills, attitudes and behaviours
- Community infrastructure and networks to better respond to needs

**Outcome: Communities are inclusive**

Community SCORE

- Social cohesion
- Group/community knowledge, skills, attitudes and behaviours

**Outcome: Communities understand issues facing children, young people and families**

Community SCORE

- Group/community knowledge, skills, attitudes and behaviours

**Outcome: All community members are able to participate in decision -making**

Community SCORE

- Community infrastructure and networks
- Social cohesion

**Outcome: Services are accessible and appropriate**

Community SCORE

- Organisational knowledge, skills and practices
- Community infrastructure and networks to better respond to needs

**Outcome: Services are safe and inclusive**

Community SCORE

- Organisational knowledge, skills and practices

**Outcome: Services work together to support families**

Community SCORE

- Community infrastructure and networks