



Australian Government

Department of Social Services

# The Commonwealth Accessible Australia Initiative

Increasing Inclusion in Australian  
Communities





Australian Government  
Department of Social Services

The Australian Government  
Department of Social Services wrote  
this.

We say **DSS** for short.

When you see the word **we** it means  
DSS.



We wrote this in an easy to read way.  
We use pictures to explain some ideas.

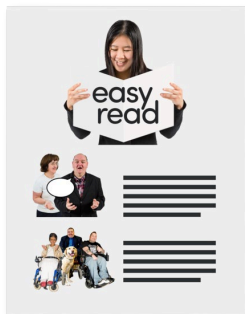
**Bold**

We have some words in **bold**.

This means the letters are thicker and  
darker.

Not bold

These are important words.



This is an Easy Read summary of  
another document.

This means it has the most important  
ideas.



We can answer any questions by email.

Email us

[AccessibleAustralia@dss.gov.au](mailto:AccessibleAustralia@dss.gov.au)



You can ask for help to read this document.

You can ask

- A friend
- Family members
- A support person.



We recognise Aboriginal and Torres Strait Islander people as the **Traditional Owners** of the land we live on.



They were the **first people** to live on and use the

- Land
- Waters.

# Contents

What is the Commonwealth Accessible Australia Initiative	5
The Project Coordination Fund	9
The Navigation Access and Information Management Fund	10
Changing Places	12
Inclusive beaches	14
Inclusive national parks	16
Inclusive play spaces	18
How will Accessible Australia happen	20
Contact us	22

# What is the Commonwealth Accessible Australia Initiative



The Australian Government is spending lots of money to help make Australia more

- **Accessible**
- **Inclusive.**



Accessible means everyone can use it.



Inclusive is when everyone

- Can **take part**
- Feel like they **belong.**



We want to make communities better for people with disability.



**Australian Government**

The Australian Government set up the Commonwealth Accessible Australia Initiative.

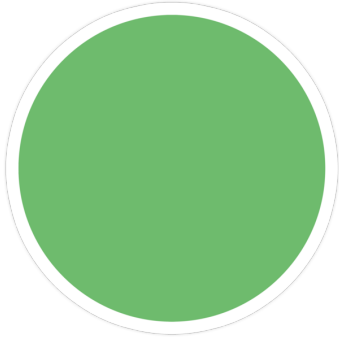
We call it Accessible Australia for short.



Accessible Australia will help communities pay for different things to make communities more accessible.



The money that the government gives is called funding.



State and Territory Governments can get funding **up to** the whole cost to build.



- Inclusive beaches

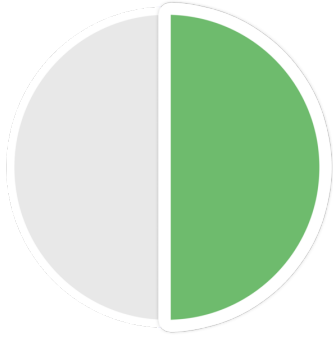


- Inclusive national parks



- **Portable** changing places.

Portable means it can be moved easily.



State and Territory Governments can get funding for **up to** half of the cost to build.



- Inclusive play spaces



- **Permanent** changing places.

Permanent means around for a long time.



There are rules about what the funding can be used for.



# The Project Coordination Fund



The Australian Government has started the **Project Coordination Fund**.

We call it the Coordination Fund for short.

This is part of Accessible Australia.

Coordination means planning to work together.



The Coordination Fund will have a one time payment for State and Territory Governments.



There are rules about who can get the funding.



The funding can be used to help with Accessible Australia projects.

# The Navigation Access and Information Management Fund



The Australian Government has set up the **Navigation Access and Information Management Fund**.

We call it Information Fund for short.



We know that having information will help communities be more inclusive.



The Information Fund will have funding over financial years.

It will go over 4 financial years.

It will start in 2024 to 2025.



It will end in 2027 to 2028.



The funding will be for other government departments to make online resources.

They will work together to make the resources.



The resources will be on a website.

The website will be around for a long time.



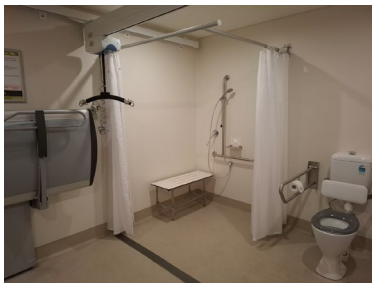
This will help more people find inclusive areas using funding from Accessible Australia.

# Changing Places



Changing Places will be able to be funded.

They can be



- Portable
- Permanent.



Accessible toilets are **not** able to support everyone.



Changing Places toilets are for people with high support needs.



## Changing Places

- Have more space



- Have extra things



- Need to follow rules



- Need to be **accredited**.

Accredited means someone has come to check that the rules have been followed.



This will support more people with disability and their carers.

# Inclusive beaches



Some of the things to make beaches more accessible could be



- Beach wheelchairs

The wheelchairs are made to go on



- Sand
- Mud
- Gravel
- Uneven ground.



- Mobi matting



This is a mat that goes on the sand.

The mat makes the ground more stable to wheel on.



These changes mean more people with disability could visit the beach.

# Inclusive national parks



Some of the things to make National Parks more accessible could be

- All **terrain** wheelchairs.



Terrain is talking about the ground.

It could be

- Bumpy
- Flat.



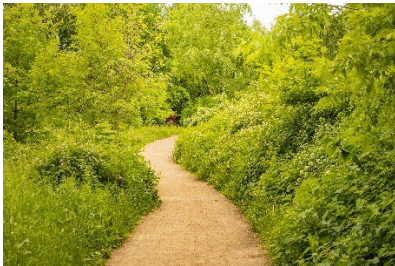
All terrain wheelchairs can be used by

- Adults
- Children.





They help people to go on more walking trails that standard wheelchairs can **not** go on.



- Accessible paths.

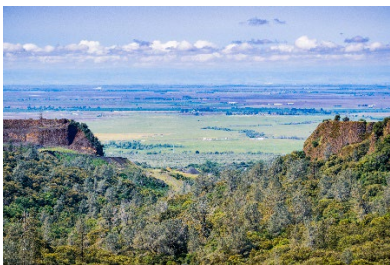
The paths need to be

- Flat
- Sealed like concrete.



They can also be made of hard gravel.

This will make it easier for people with wheelchairs to access National Parks.



These changes mean more people with disability could visit National Parks.

# Inclusive play spaces



Some of the things to make play spaces more accessible could be



- Inclusive play equipment

Like



- Liberty swings
- Sensory play platforms
- All access spinners.



- Visual communication toys for people who are non speaking.



This would give more children with disability the chance to use play spaces.

# How will Accessible Australia happen



Funding for Accessible Australia will happen in financial years.

The financial years are



- 2024 to 2025
- 2025 to 2026
- 2026 to 2027
- 2027 to 2028



We will have **funding agreements** with everyone who gets funding.

Funding agreements are the rules for how the money can be spent.

It also says what needs to be done like writing reports.



Everyone who gets funding will need to follow the rules.



We will give more information about the funding dates for 2024 to 2025 soon.

## Contact us

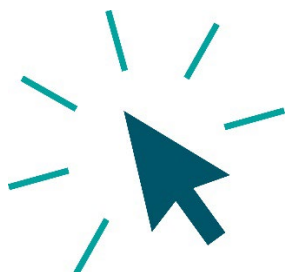


You can contact us if you **need more information.**



You can send us an email.

[AccessibleAustralia@dss.gov.au](mailto:AccessibleAustralia@dss.gov.au)



You can look at our website.

[www.dss.gov.au/disability-support-services/accessible-australia](http://www.dss.gov.au/disability-support-services/accessible-australia)



easyread.tech created these original illustrations. Please do not use these illustrations without permission. Visit [easyread.tech](http://easyread.tech) for more information.