



Australian Government

Department of Social Services

New NDIS rule 4

Who can manage funds in an NDIS plan





Australian Government
Department of Social Services

The Australian Government
Department of Social Services wrote
this.

We say **DSS** for short.

When you see the word **we** it means
DSS.



We wrote this in an easy to read way.
We use pictures to explain some ideas.

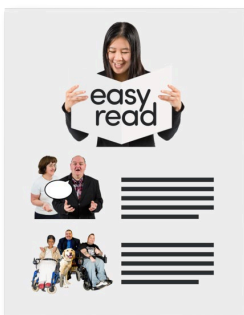
Bold

We have some words in **bold**.

Not bold

This means the letters are thicker and
darker.

These are important words.



This is an Easy Read summary of a
bigger document.

This means it has the most important
ideas.



You can ask for help to read this document.

You can ask

- A friend.
- Family members.
- A support person.



We recognise Aboriginal and Torres Strait Islander peoples as the **Traditional Owners** of the land we live on.



They were the **first peoples** to live on and use the

- Land.
- Waters.

Contents

Who can manage an NDIS plan	5
What the NDIA must think about	8
What the NDIA must not think about	10
What else the new rule does	11
Contact us	12

Who can look after an NDIS plan



The **National Disability Insurance Agency** are the people who look after the NDIS.

We call them the **NDIA**.



The NDIA decides who looks after an NDIS plan.

Look after means care for the money in the NDIS plan and make payments for your services.



A person can only look after an NDIS plan if they will keep the participant safe.

A participant is someone who has an NDIS plan.



A participant can ask for someone else to look after their NDIS plan.



The new rule helps the NDIA decide if this person

- Can manage a plan.
- Will keep the participant safe.



5 kinds of people can look after an NDIS plan

- **A participant.**

- **A nominee.**



A nominee is someone who helps a participant with their NDIS plan.

Like

- A family member.
- A friend.

- **A Child representative.**



Child representatives are adults who can look after a child's NDIS plan.

Like a parent.

- **Plan managers.**



Plan managers are people paid to look after an NDIS plan.

- **The NDIA.**



What the NDIA must think about



When the NDIA decides who can look after a plan they must think about

- If the participant could get hurt.



- If a judge said someone else must look after the participant's money.



- If the person looking after the plan has the right skills.

Like if the person can make their own decisions.

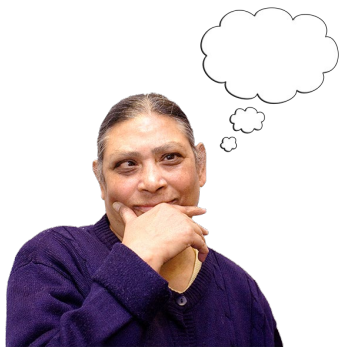
This includes if the person has support to make decisions.



The NDIA must think about the kind of supports in the NDIS plan.

This includes

- Supports working now to keep the participant safe.
- Supports that worked in the past to keep the participant safe.



The NDIA must also think about anything else

- The participant thinks is important.



- The NDIA thinks is important.

What the NDIA must not think about



The new rules say some things the NDIA **must not** think about.

When the NDIA decides who can look after a plan, they **must not** think about

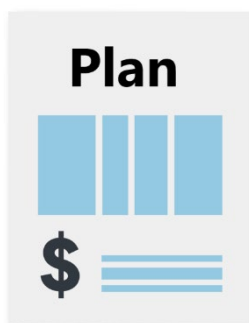


- The type of **impairment** a participant has.

Impairment is when you find it hard to do things.

Like

- See.
- Walk.
- Understand.



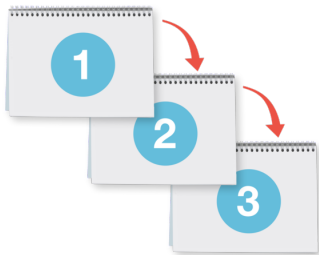
The NDIA **must not** think about

- How much money is in the NDIS plan.
- If a participant has not spent all the money in their NDIS plan in the past.

What else the new rule does



The NDIS already has 2 different rules about managing NDIS plans.



The new rules will group all the rules about looking after NDIS plans together.



We are calling them the Management of Funding Rules.

Contact us

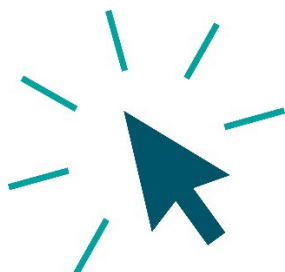


You can contact us if you **need more information.**



You can send us an email.

NDISConsultations@dss.gov.au



You can look at our website.

www.dss.gov.au/national-disability-insurance-scheme-review-and-reforms/changes-ndis-act



easyread.tech created these original illustrations. Please do not use these illustrations without permission. Visit easyread.tech for more information.