



Australian Government

The Australian Government response to the Disability Royal Commission

Easy Read version



How to use this document



The Australian Government wrote this document.

When you read the word 'we', it means the Australian Government.



We wrote this document in an easy to read way.

We use pictures to explain some ideas.

Bold
Not bold

We wrote some important words in **bold**.

This means the letters are thicker and darker.



We explain what these words mean.

There is a list of these words on page **18**.



This is an Easy Read summary of another document.

This means it only includes the most important ideas.



You can find the other document on our website.

www.dss.gov.au/DRC-Aus-Gov-Response

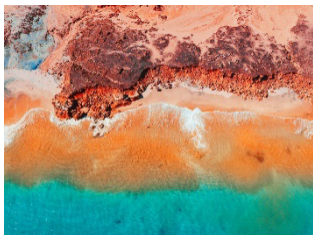


You can ask for help to read this document.

A friend, family member or support person might be able to help you.



We recognise Aboriginal and Torres Strait Islander peoples as the traditional owners of the land we live on – Australia.



They were the first people to live on and use the:

- land
- waters.

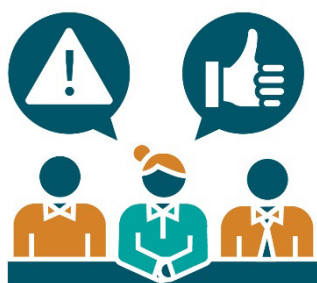
What's in this document?

| | |
|--|----|
| About the Disability Royal Commission | 5 |
| About the recommendations | 6 |
| How the Disability Royal Commission heard from the community | 8 |
| What the Disability Royal Commission told us | 13 |
| What we paid for | 16 |
| Word list | 18 |
| Contact us | 23 |

About the Disability Royal Commission



We created a **royal commission** to find out how to make our community safer for people with disability.



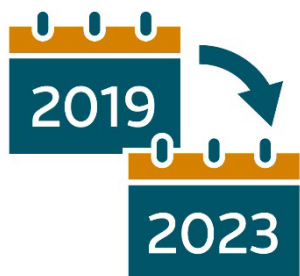
A royal commission is an official way of looking into a big problem.

It helps us work out what:

- has gone wrong
- we need to improve.



We call it the Disability Royal Commission.



The Disability Royal Commission ran from 2019 to 2023.

About the recommendations



The Disability Royal Commission shared ideas about what governments and services can change.

These ideas are called **recommendations**.



The Disability Royal Commission shared **222** recommendations.

The recommendations explain what we must do to stop people with disability experiencing:



- **violence** – when someone hurts you physically



- **abuse** – when someone treats you badly.

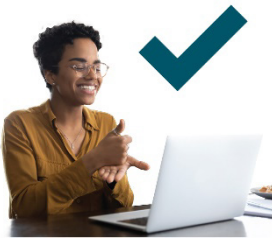
The recommendations aim to make Australia:



- safer for people with disability



- more **accessible**.



When the community is accessible, it is easy to:

- find and use services
- move around.

The recommendations also aim to make Australia more **inclusive**.



When something is inclusive, everyone:

- can take part
- feels like they belong.

How the Disability Royal Commission heard from the community



10,000 people shared their experience with the Disability Royal Commission.



The Disability Royal Commission had **33** public hearings.

A public hearing is a meeting where people can share their story or problem.



They share this with people who work for the government.



Anyone can watch a public hearing.

The Disability Royal Commission had **1,785 private sessions**.



A private session is a meeting between:

- someone with a story to tell
- one of the people in charge of the Royal Commission.



61% of the private sessions were with people with disability.

837 witnesses shared their story with the Disability Royal Commission.



A witness is a person who:

- had an experience
- saw or knew that something happened.



209 witnesses were people with disability.



A **submission** is a document or recording that explains:

- your experience
- an idea you have.



7,944 people gave a submission to the Disability Royal Commission.



55% of submissions came from people with disability.



29% of submissions came from family members.



17,824 people called the Disability Royal Commission to share their experiences.



The Disability Royal Commission wrote **14 issues papers.**



Issue papers are documents that explain:

- a problem
- ways to fix a problem.



There were **710** responses to these issues papers.



The Disability Royal Commission ran **more than 700** community activities.



The Disability Royal Commission had **9** workshops to talk about how **policies** affect people with disability.



A policy is:

- a government plan for how to do things
- where rules come from.



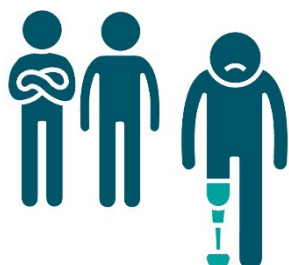
They also had **3 roundtables** about how to make policies better.



A roundtable is a group of people who talk about a topic.

Each person has a say about the topic.

What the Disability Royal Commission told us



The Disability Royal Commission told us that many people with disability experience **discrimination**.

Discrimination is when someone treats you unfairly because of a part of who you are.



The Disability Royal Commission told us that many people with disability aged 18 to 64 years have experienced abuse.



They told us that **55%** of these people had experienced abuse since they were 15 years old.



This includes:

- physical abuse
- **sexual abuse.**

Sexual abuse is when someone:



- makes you do sexual things you don't want to do
- does something sexual to you that you don't want them to do.



The Disability Royal Commission told us that the experiences of people with disability can affect:

- their goals
- how they live their lives.



The Disability Royal Commission told us that around **400** people with disability die every year when they could have lived longer.



For example, if the right things were done to keep them safe.



The Disability Royal Commission told us that **47%** of people with disability who are old enough to work don't have a job.



This has not changed in **25 years**.



The Disability Royal Commission told us that violence against people with disability costs Australia nearly **\$46 billion** each year.

What we paid for



We paid other parts of the government to support the Disability Royal Commission.

We paid **\$599.3 million**.

This included:



Australian Government
Attorney-General's Department

- **\$379.1 million** to the Attorney-General's Department



Australian Government
Department of Social Services

- **\$165.4 million** to the Department of Social Services



- **\$47.8 million** to the National Disability Insurance Agency (NDIA)



NDIS Quality and Safeguards Commission

- **\$7.1 million** to the **NDIS Quality and Safeguards Commission**.



The NDIS Quality and Safeguards Commission makes sure people with disability who take part in the NDIS:

- are safe
- get good services.



We created the Commonwealth Disability Royal Commission Taskforce.

We just call it the Taskforce.



We paid the Taskforce **\$4.25 million** to support its work over 2 years.



The Taskforce gave us advice about:

- what people thought about the final report
- how to respond to the final report.

Word list

This list explains what the **bold** words in this document mean.



Abuse

Abuse is when someone treats you badly.



Accessible

When the community is accessible, it is easy to:

- find and use services
- move around.



Discrimination

Discrimination is when someone treats you unfairly because of a part of who you are.



Inclusive

When something is inclusive, everyone:

- can take part
- feels like they belong.



Issues papers

Issue papers are documents that explain:

- a problem
- ways to fix a problem.



NDIS Quality and Safeguards Commission

The NDIS Quality and Safeguards Commission makes sure people with disability who take part in the NDIS:

- are safe
- get good services.



Private session

A private session is a meeting between:

- someone with a story to tell
- one of the people in charge of the Royal Commission.



Policy

A policy is:

- a government plan for how to do things
- where rules come from.



Public hearing

A public hearing is a meeting where people can share their story or problem.

They share this with people who work for the government.



Recommendations

The Disability Royal Commission shared ideas about what governments and services should change.

We call these ideas recommendations.



Roundtable

A roundtable is a group of people who talk about a topic.

Each person has a say about the topic.

Royal commission



A royal commission is an official way of looking into a big problem.

It helps us work out what:

- has gone wrong
- we need to improve.

Sexual abuse



Sexual abuse is when someone:

- makes you do sexual things you don't want to do
- does something sexual to you that you don't want them to do.

Submission



A submission is a document or recording that explains:

- your experience
- an idea you have.



Violence

Violence is when someone hurts you physically.



Witness

A witness is a person who:

- had an experience
- saw or knew that something happened.

Contact us



You can send us an email.

DRCResponseConsultation@dss.gov.au



You can write to us.

GPO Box 9820

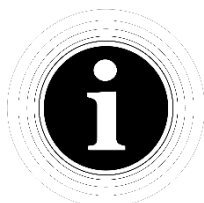
Canberra

ACT 2601



You can visit our website.

www.dss.gov.au/DRC-Aus-Gov-Response



The Information Access Group created this Easy Read document using stock photography and custom images.

The images may not be reused without permission.

For any enquiries about the images, please visit

www.informationaccessgroup.com.

Quote job number 5881-A.

Helen Butcher created the art on the front cover of this document.

She is an artist. Her picture is called 'Belonging'.

It is about inclusion.

She made this art for the Australian Government Response to the Disability Royal Commission.

We thank Helen for sharing her art with us.