



# Career Pathways Pilot for Refugees

## A new Australian Government Initiative

### What is the Career Pathways Pilot?

The Career Pathways Pilot is a new Government initiative to improve employment outcomes for refugees and those that have been in Australia for up to five years.

The Career Pathways Pilot aims to assist refugees who can communicate well in English, to use their professional or trade skills or qualifications in Australia in the same or similar occupations.

Refugees in the pilot will work with a dedicated Career Pathway Advisor to:

- **Plan** their career pathway in Australia.
- **Learn** how they can use their existing skills in the Australian workforce and how to obtain recognition of their qualifications.
- **Access** employment opportunities and training to upskill or reskill.
- **Achieve** their career goals.



### Why are career pathways for refugees an Australian Government priority?

The Australian Government, through its programs and policies, promotes strong workforce participation by people of working age. For many refugees, adjusting to life in a new country is a challenge. Understanding the process for finding work in the same, or a similar career can be overwhelming. Refugees may find that they need to adjust their career expectations or that their professional or trade qualifications are not recognised in Australia.

A lack of professional networks or local experience in Australia can lead to refugees feeling like they need to accept a low-skilled position that does not use their skills and/or previous qualifications.

Employment is an important factor for successful settlement in Australia as it has a range of benefits, the most obvious being financial security, but also health and wellbeing.



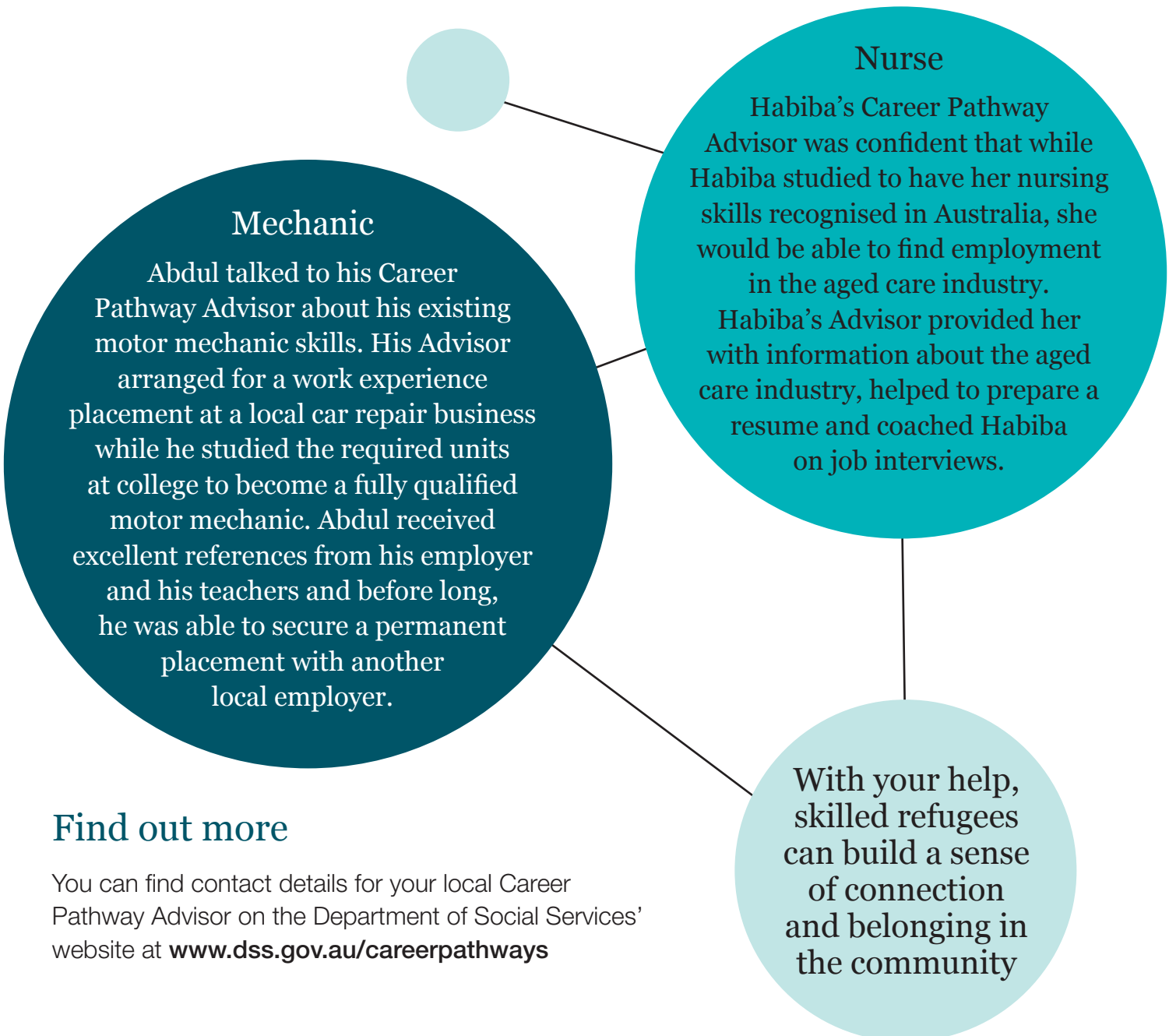
## Where?

Career Pathway Advisors are in:

- Sydney
- Melbourne
- Perth
- Canberra
- Toowoomba

## What can you do to help?

If you work with refugees who speak English well and have existing professional trade skills and qualifications, talk to them about the Career Pathways Pilot and provide them with the details of their local Career Pathway Advisor. Alternatively you can make a referral on your client's behalf and ask your local Career Pathway Advisor to contact your client directly.



## Find out more

You can find contact details for your local Career Pathway Advisor on the Department of Social Services' website at [www.dss.gov.au/careerpathways](http://www.dss.gov.au/careerpathways)